

Tomomi's group show (still art)



- 手洗のざすと流水音が25秒続きます。
- ランプが点滅を始めると流水音が停止します。
- 途中で再度手を洗ったと認識します。

TOTO

音停止

The text on the wall is the translation of the description on the flushing sound machine "sound princess" (otchime) It is usually attached in the public toilet in Japan. The machine is produced because many Japanese people feel embarrassed about their pee sound. The sound of running water from this machine can cover their pee sound. I like this clear and simple description for this old model machine. And it can stand on the line between public and private.

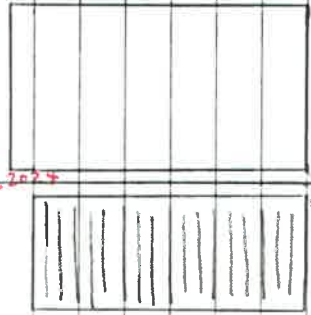
Sound princess (pee), 2024
Pencil on wall

When you hold your head over it,
The sound of running water stops.....
If you hold your hand over it again....

Sound princess (pee)
Sound princess for peeing



Tempo tissue - Kubari, 2024
video 10 min loop



At that time, Thomas, Tomomi and Simon were watching the new Badman film. Then I saw the tiny insect running in to the Tatami. I pointed it out and said "Is it a cockroach?" Simon told me No it's silverfish. Silver Fish? That was a new word for me. I decided to put this small piece of Tatami as a site-specific work for the silverfishes.



silverfish and Simon's tatami, 2024
Small piece of tatami

The recipe was filling the time gap, 2024

you can see a thin noodle from the gap.

mission, 2024
staple needle, thin noodle

I travel with
hathi
noodle
left from
Japan to
Germany.
The staple
function
dashed
protection

W.M.P
Date 24. 2. 2024 No.

The idea is coming from the Japanese local cuisine Green Pea Rice. I would write about it next time. I wanted a little painting component for this show. acrylic on clay